

# BULLETIN

Issue 225

September 1995

Price £1

The News Bulletin of the  
**SOUTHERN COUNTIES CHESS UNION**

Published September, November, January, March, May and July

**Editor:** RJ Haddrell, 48 Southview Rd, Tunbridge Wells, Kent TN4 9BX: tel 01892 532361. All enquiries, orders and copy to the Editor. Copy deadline, not guaranteed flexible, is the 15th of the month of publication.

**Subscriptions:** Annual subscriptions run from September, price £6. Part-year subscriptions pro rata. Single issues are sold at the cover price. Back numbers are usually available.

Grading Lists (August 1995): prices: -	By post	Collected
SCCU List, 10+ games in last 3 seasons	£4.00 (£3.80 discount)	£3.60
BCF List: all English players, 10+ games	£9.00	£8.60
BCF Rapidplay List	£2.25	

Discount rate is for orders of 5 or more SCCU Lists to be posted to the same address. BCF Direct Members may deduct £2 from the price of the (main) BCF List and 25p from the price of the Rapidplay List. Orders to HM Cath, 5 Northwood Avenue, Purley, Surrey CR8 2EP 0181 660 6252. Phone first if collecting. All prices include postage and packing as appropriate. Make cheques payable to SCCU.

**SCCU OFFICERS**

President	CI Howell, 28 Fowler Close, Maidenbower, Crawley, W Sussex RH10 7UN 01293 885176
Deputy President	JA Philpott, 50 Cranston Gardens, Chingford, London E4 9BQ 0181 527 4063
Secretary	L Davis, 96 Hurst Park Rd, Twyford, Reading, Berks RG10 0EY 01734 343806
Treasurer	WA Suttill, 7 Lonsdale Rd, London W11 2BY 0171 229 9750 (do not ring after 9 p.m.)
Grading Secretary	HM Cath, 6 Northwood Avenue, Purley, Surrey CR8 2EP 0181 660 6252
County Match Controller	DR Sedgwick, 23 Tierney Court, Canning Rd, Croydon CR0 6QA 0181 656 7682
Individual Tournament Sec	FC Manning, 44 Willow Rd, Wallington, Surrey SM6 0PF 0181 647 0063
Fixture Secretary	FC Manning
Junior Organiser	BH Birchall, 26d Colville Square, London W11 2BQ 0171 792 8031
Curator of Equipment	FC Manning
Bulletin Editor	RJ Haddrell
Match Captain	RCN Lee-Anderson, 18 Longton Grove, Sydenham, London SE26 6QE

**SCCU EXECUTIVE COMMITTEE**

The Executive Committee consists of the Officers, plus the following County Delegates (or their deputies).

Berks	NW Dennis, Boundary House, 230 Greys Rd, Henley on Thames, Oxon RG9 1QY 01491 576052
Bucks	JT Melsom, 2 Chiltern View, Saunderton, High Wycombe, Bucks HP14 4HX 01494 562306
Cambs	A Hon
Essex	SD Bates, 50b Endsleigh Gardens, Ilford, Essex IG1 3EH
Herts	C Lean, 47 Benslow Lane, Hitchin, Herts SG4 9RE 01462 433248
Kent	JM Forster, 83b Humber Rd, Blackheath SE3 7LR
Middx	RJ Pearce, 43 Sinclair Rd, London W11 0171 602 0758
Oxon	LR Millin, 12 Rowell Drive, Begbroke, Oxford OX5 1SE 01865 376634
Surrey	WE Waterton, 14 Woodfield Gardens, New Malden, Surrey KT3 6DZ 0181 949 0654
Sussex	Dr DL Roberts, Flat 1, 28 High St, Lewes, E Sussex BN7 2LU 01273 475275

Life Vice-President: JJ Lauder, Grace Lodge, 4 Manor Rd South, Hinchley Wood, Surrey

Auditor: Stephen Hill, 48 Maywater Close, Sanderstead, Surrey CR2 0ES 0181 657 4552

Facts we try to get right. Opinions, unless otherwise attributed, are the Editor's.

## SCCU EXECUTIVE COMMITTEE

The Executive met on Friday 8th September 1995 at the Durham Castle in London W2. 14 attended. If your Editor's account is coloured by beer and boredom he's sorry, and if he's missed anything out that will have been the bit where a fit of the giggles obliged him to leave the room. There were large tracts of Metameeting. (That's the Bulletin's word for meetings about meetings.) The official minutes, when circulated to county reps, will doubtless be full and dispassionate.

A brief verbatim extract, before we start, to show what the meeting wasn't like. The Treasurer had to leave early. Chairman: "Do you want to say anything on the [BCF] head lease while you're here, Tony?" Treasurer: "No."

(1) The Executive considered the minutes of various past meetings. Yes, this is a Metameeting bit, and sorry if the first item has to be comment. We get factual further down. But we can't resist recording that NINE minutes were spent discussing whether reports circulated in advance should be summarised in the minutes, or just appended to them and taken as part of the record. And if the former, should the minutes summarise the previous meeting's minutes (and circulated reports) under Matters Arising? Your Editor actually thinks this an important point. But nine minutes? It was the Treasurer who saved us from infinite regression by proposing Next Business.

(2) **Insurance.** Some of our Trophies - the ones not currently held - are uninsured. This is against Union policy, and WAS said he would insure them if told to. Your Editor has not recorded any decision.

(3) **London Chess Association.** At its last meeting the Executive elected John Philpott LCA rep. The LCA then went and elected him Treasurer. Feeling that a Treasurer ought probably not to be someone's rep as well, the Executive voted to replace him as SCCU rep with Chris Howell. Someone thought that as the "more important" body we shouldn't have an LCA rep at all; they should be applying to have a rep with us.

The LCA is considering a blacklist of "undesirable" players. The word is theirs and we don't know whether the quotes are. (An Undesirable Redeemed was too good to be news but it's on page 6.)

(4) **Womens event.** We reported last time that no other Union had so far applied for the BCF £2000 for a womens event in 1996. That remained true and we got it. There has since been some interest from another Union and it was agreed that we could happily waive our right to the money in exchange for an assurance that we'd have it in 1997. 1997 is a more desirable year because it's the centenary of the first womens event.

(5) **Apologies for absence.** It was agreed that those not entitled to attend SCCU meetings should not be entitled to send apologies for absence. We haven't invented this, but perhaps it was less solemn than we've made it sound. Someone apparently did it, for the Council Meeting.

(6) **National League.** The BCF is setting up its own National League, starting in January under the direction of Simon Brown, in direct competition with the 4NCL. Dates are to clash with 4NCL ones and it's clearly meant as a hostile takeover. We're not sure whether it already has the Management Board's OK, but if not it seems to be a formality. It stems from deep dissatisfaction with the way the 4NCL's run, and if your Editor tried to give details he'd be at risk of getting them wrong. Someone said, and no one dissented, that if we're to have two rival leagues it is important that they clash with each other and not with county matches or other things. The BCF would obviously prefer it if the 4NCL just folded. Someone said the BCF seemed to be rushing things, given that the 4NCL season starts soon and the new League hasn't been officially announced yet. Someone else said, with doubtful relevance, that it had been in the air for a year or more.

(7) **Grading.** Martin Cath said the SCCU list was not yet available because the printer was on holiday and his assistant staff lacked the required skills. It should be available before you read this. May be the Bulletin's imagination, but the printer always *does* seem to go on holiday when he sees the SCCU list coming. The BCF list (printed by someone else) appeared on schedule at the start of August. The SCCU one is not intended to match that, but second week in September's a bit late.

A number of U10s have nonsensical grades, apparently related to a London event they may or may not have played in. The Bulletin doesn't understand what happened and isn't sure that anyone does, but a grader did something peculiar and when the BCF came to print out the "top twenty aged under ten" they found IMs in the list and all kind of anomalies. The IMs' grades aren't affected. No doubt corrections will be published.

Another problem is that the BCF's hard disk fell over recently and had to be replaced, and they have not been able to recover all their data. (What the Executive heard was that the BCF had everything backed up but managed to destroy some of the backups while attempting to copy them to the new disk. No one understood this.) All the "permanent" data is intact, but last year's detailed results are lost and they are needed for individual player print-outs. The BCF have appealed to graders to send fresh copies of results. Where these are on floppy disk the operation's manageable, but in some cases graders will just have to return the printed copy the BCF sent them in the first place. And someone will have to type all of that in again. Speaking for itself the Bulletin would just tell people sorry, no individual print-outs this year.

Roger Edwards, national Grading Officer, is holding a meeting in London on the 30th September to discuss the planned major overhaul of the grading system. Rolling grades are on the agenda, and a major focus will be the nuts and bolts of how graders actually work (or would like to). All graders have been invited. Or so your Editor assumes, since he has.

(8) **County match fixtures.** Inevitably there was a bit of grumbling about the distribution of fixtures, and one or two counties said the homes and aways didn't seem to have changed since last year. They will alternate year by

year in future.

There are 26 teams altogether, three less than last time. In the Open, Cambs and Oxon have given notice that they wish to play all their matches over 16 boards. This is their right. Other matches may still be over 16 or 18 boards by agreement, but in the absence of agreement 20 it is.

In the U125 the Fixture Secretary had provisionally planned for single round but three of the five counties preferred double. A compromise was suggested (play double round by agreement, and single-round matches score twice) but in the end the vote was for straight double round. In the U150 Essex proposed double round but there was no seconder.

As the U125 fixtures now had to be changed, could we be flexible about the U100 as well? Point was, somebody fancied bringing in a Richmond Juniors team and calling it Middx. (Or Surrey. Richmond juniors are practically always eligible for both.) It was agreed that this would be OK provided Middx (or Surrey) went along with it and said so by the 14th September, and the three counties already in didn't object. You'll know by now, or match captains will, that nothing came of it. (No one objected, there just wasn't an application.)

What should we do, for eligibility purposes, about the U10s with silly grades (see 7)? If necessary we would have to treat them as ungraded.

**(9) Government funding.** Next to nothing's known about the future of this except that we're Heritage now and not a sport yet. The message coming across seems to be that our chances of becoming a sport aren't good and we'd have to stress the physical demands made by the game.

**(10) Juniors.** Bruce Birchall gave a very full breakdown of his plans for the season.

**(11) Dates.** The Executive will meet on Fridays 22nd March and 17th May 1996 and the Annual Council Meeting will be on Saturday 29th June, not necessarily at Tavistocks.

The meeting closed at 10.39 p.m., having lasted just about three and a half hours.

### BCF MEETINGS

A very quick rundown on the Management Board and Council meetings of Saturday 23rd September. We weren't there and what details we have were picked up in some haste at the end of a congress. The MB, meeting in the morning, talked about the St Leonards head lease and decided not to buy it. In the medium term the BCF office will probably have to find new premises but we understand they would expect to stay in St Leonards (or Hastings, presumably). The only other MB bit we know about is the new national league. It's going ahead. So, for all we know to the contrary, is the 4NCL. Not sure whether it came up in the morning or the afternoon, but there is to be a public meeting about the future National Chess Library. The core of this will be the books in the Golombek bequest, currently idle at the BCF office.

The afternoon Council meeting re-elected all officers standing for it, noted with pleasure that various Yorkshire leagues are to register for Game Fee, and rejected Lester Millin's proposals on Direct Members. These came up in the May issue (223:4), and we won't go into it here. A "Minor County" is now, as proposed by the MCCU, any county nominated as Minor by its Union at the start of the season. As far as we know it's entirely up to the Unions to decide what criteria to use. The SCCU Executive's missed the boat on this one and presumably our nominations will have to get decided by the County Match Controller and/or President. Oh, nearly forgot. A straw poll favoured reducing the size of the Management Board.

### LETTERS TO THE EDITOR

Sorry about the Editorial footnotes to the first letter. Some of it's comment and some is clarification.

**Dear Editor,**

Chess is transferred to the Department of National Heritage from next April. We are not as yet recognised as a sport, though, within the DNH and cannot as yet apply to the Sports Council for funds. Though that day may yet dawn. The case to be classified as a sport is essentially (to this commentator) the case for building an infrastructure for coaching and playing opportunities on a paid basis, instead of a voluntary one, with sufficient resources to do the job properly. Recognition as a sport to get some parity with other sports. So chess can take off, as they have.

Hence my advocating raising funds to put organising, coaching and arbiting on a proper paid basis, mischievously<sup>1</sup> reported in the last Bulletin as Bruce wants to get paid. As if it was a campaign to selfishly wage just the motivator! A suggestion relying on prejudice, not on rational argument, to defeat the case. The issue is plain: if anyone does a sustained amount of work, especially during normal working hours, they should be paid. The principle is clear. Reasons for opposition less so.

I was pointing out, re the editorial view of "What a way to run a Union"<sup>2</sup>, that the stop-go cycle of burning out one JO and collapsing into inactivity when he can't carry on, and then proceeding to find another mug only for the same contradiction to re-appear when s/he gets stuck in, is no way to run a Union either.

The question of an infrastructure has to be faced. It has to be stable. It has to provide continuity. It has to be

able to expand as work expands. i.e. once a developmental approach starts to work. i.e. be paid. Either the structure careers out of control - or career structures are built. Which is it to be?

Our amateur traditions die hard, though. So, rather like the Roman Senator who finished every speech in the Senate with the words Carthage Must be Destroyed, until, one day, bugger me but there it was, razed to the ground, I have decided to advocate the following propositions in my every letter, whatever the subject:

*We need to popularise our sport. We need Sports Development Officers for Chess in post. We need to make the grant-applications to fund these posts and give them the resources to work with.*

Until they too become generally accepted.

Doors are opening but some people just cannot see it. Their minds remain closed. Me: my antennae are twitching in the manner of a water-divining stick. Shiver me timbers but treasure be buried here! here!! and here!!! X, X<sub>2</sub> and X<sub>3</sub> mark the spots. All you need is a map of the territory to unearth it.

There is charity money and there is lottery money to apply for: both the National Lotteries Charities Board kitty and the National Heritage lottery kitty. But there is also money we can raise ourselves.

Which brings me to BB's latest BB (Brainstorming Brainwave). I propose to make a voluntary donation<sup>3</sup> of what would be the Game Fee (i.e. I am waiving it not being payable) for the all-junior sections of my series of Rapidplay events at Chalk Farm, starting 8th October, to the BCF's new charity, BCF Educational Trust. It doesn't cost much, but if others follow this lead, it will soon start to add up. The idea is elegantly simple: people know what Game Fee is and how it is calculated. All they are being asked to do is put something back into the game. To invest in juniors.

I can make decisions for my own events, in ten minutes. It is logical that I would wish to see the SCCU do the same. That will take longer to achieve. Realistically, this year's budget having been set, it is for next season, not this. It may mean higher entry fees. But if it provides an exemplary lead, then let's do it. I believe in leading from the front. What say ye to that? Oh ye of Much-Mumblin-in-the-Marsh? And spare us the acrimony<sup>4</sup>, for once. Keep the acri, let's see the cholera of your money!

BRUCE (BIRCHALL)

LONDON W11

Editor's notes:

(1) I won't attempt to rebut this offensive remark. I can't quite tell whether the charge of prejudice is aimed at me, but if it is the same goes for that.

(2) "What a way to run a Union" was my comment on a system that changes Presidents every two years even if a perfectly good one's in situ. I hear that in the NCCU the tenure's one year and the counties take it in turns to nominate someone. What a way to run a Union. But I share Paul Buswell's reservations about the frequency with which "[re-]elections are nodded through Council" (*ChessMoves*, August 1995).

(3) Probably my fault, but as I read through this paragraph I became unsure whether the donation was going to come from the organisers or the players. Bruce has confirmed that he meant the organisers.

(4) I don't know what acrimony Bruce has in mind, or where Much-Mumblin-in-the-Marsh is. (Thought for a mad instant it was Tunbridge Wells but it can't be, ye's plural.)

Dear Richard,

You might like to include in the SCCU Bulletin and/or the KJCA Magazine [which I edit: Ed] the following interesting arbiter's decision which occurred at the Intel World Grand Prix Qualifying Tournament in Hastings on the 28th-29th August.

The strength of this 11-round swiss tournament was extraordinary: there were 45 Grandmasters among the 119 entrants from 19 countries. Each player had 25 minutes for the entire game, and the rules stated that if an illegal move was made and replied to it must stand.

In a game between two foreign GMs, Black, with 10 seconds left, pushed a Pawn from the seventh to eighth rank and, without substituting it with a Queen, Rook, Bishop or Knight, pressed his clock. His opponent, with 7 seconds left, moved his King and pressed his clock. The first player then tried to put a Queen where his Pawn was and an argument ensued with both players pressing their clock buttons simultaneously and ferociously.

The arbiter stepped in quickly and managed to stop the clocks before giving his decision that the Black Pawn on the eighth rank was clearly a Pawn, and should remain so. His logic was that moving it to the back rank and not substituting it was illegal but, under the Tournament rules, as White had replied Black's move must stand. The situation was further complicated as both players affected not to speak English. However, after a heated discussion in what sounded like several different languages, a draw was somewhat grudgingly agreed.

This led me to wonder what the ruling would have been if, before pressing his clock, Black had reached to the adjacent board for a Queen and mistakenly picked up a King, substituting this for his Pawn. If White in his haste had not noticed and had made a reply, presumably by analogy Black would have had to continue with two Kings. And what then? Would White have needed to mate both simultaneously in order to win?!

Regards

DAVE (VIGUS)

Chislehurst

## NEWS FROM THE COUNTIES

**BUCKS Leagues 1994-5** - Div 1 1 (on SB after a tie on matches and games) Berkhamsted, 2 Bourne End; 9 teams. Div 2 1 RGS High Wycombe, 2 High Wycombe II; 10 teams. **Individual Championship** is shared between I Edmundson and L Wooldridge, after delays to the tournament left no time for a play-off; Div 2 1 AG Kelly, 2 DJ Turner; Div 3 1 M Vann, 2 DM Forbes; Div 3 1 J Perez, 2 A Reed. We note that promotion and relegation operates in the Individual events, suggesting a continuity of entries most counties would envy.

**HERTS Leagues** - Div 1 1 Hertford I, 2 St Albans I; Div 2 1 Hemel Hempstead I, 2 Royston I; Div 3 1 Watford II, 2 Hertford II; Div 4 1 Old Elizabethans, 2 St Albans IV; Div 5 1 St Albans VI, 2 Hoddesdon III; Div 6 1 Letchworth III, 2 Barnet III; Div 7 1 Hoddesdon IV, 2 St Albans VII; Div 8 1 Barnet IV, 2 WGC III. If you demoted a team from Div 3 to Div 8 there'd be seven teams per division. Club KOs - Russell Trophy: Hertford beat Hilltop 3½-1½ in the Final; Sharp Trophy: Hoddesdon beat Stevenage 3½-1½. Individual KOs - Capel Cup (County Championship): Alastair Simpson beat Steve Law; Burn Cup: Alan Atkinson beat Steve Law. Lots of primary school activity but the Herts Newsletter doesn't actually give many results.

**KENT Summer Quickplay league** might finish in October with luck. Maidstone CC report a pretty successful outing to Tyniste 15-17 September in the European Club. Round 1 **MAIDSTONE 6 0 LYON** def. Round 2 Maidstone 1½ 4½ Rishonle Zion (Isr). 3rd place play-off Maidstone 3½ 2½ Tampere (Finland). Third in its group is the highest a British club has ever managed. Zemun, from somewhere mid European, won the group. No news of Guildford but they have played.

**SUSSEX Champion** (from 8 entrants) is FJ Kwiatkowski who beat IG Kelly in the Final; East Sussex Queen (3 entrants) RR Harper 2½/4; West Sussex Queen (7 ent) RD Hirsch 5/6; Veterans (3 ent) RD Hirsch 4/4. **McArthur Cup** Northern The Holt, Western Worthing, Central/Eastern Hastings; Brighton had free passage to the KO stage, we think. The semi-final was notable for a 3-3 draw Brighton v Worthing in which every game was drawn (Brighton won the replay). In the Final against Hastings there were only 5 draws and Brighton won a game. **Sussex Jamboree** (14 teams) was won jointly by Brighton A and Brighton B.

**Mid Sussex League** Div 1 1 Hastings I 56/80, 2 Crawley 1 49...; Div 2 1 Lewes I 54/70, 2 Brighton II 44½...; Div 3 1 Aldrington House 42½/63, 2 Bognor & Arun 41... Div 4 1-2 American Express, Peacehaven 44/70... Scoring is match points (2,1,0) plus game points and we think we've worked the maximums out right. **South West Sussex League** 1 Bognor & Arun 12/14, 2 Rustington A 9...

## JUNIOR NEWS

**MIDDLESEX GIRLS CHAMPIONSHIPS** at Imperial College 14th May 1995 (OK it's late, only just got it) **Under 18/14** (8 pl) 1 Iva Anguelova 6/6; 2 Heather Richards (Kent) 5; 3-4 Liora Mirvis (takes U14 title), Alison Swersky 3...

**Under 12/11** (15 pl) 1 Emily Manuel (Kent) 5½/6; 2 Mary Hinks-Edwards (takes U12 title) 4½; 3-4 (and share U11 title) Naomi Attar, Albertine Fox 4...

**Under 10** (10 pl) 1 Harriet Bates 5½/6; 2 Julie Dwek 4½; 3 Alexandra Gotlib, Alison Winston 3½...

**Under 9** (23 pl) 1-2 Sara Higgins (Kent), Vanessa Aarons 5½/6; 3-7 Jalina Belle, Charlotte Greig, Joanna Walker, Francesca Berlin (U7), Zoe Perry 4... Results Bruce Birchall

**SCCU GIRLS SCHOOLS JAMBOREES** at Imperial College 2nd July 1995

**Under 18** (3 teams of four) 1 Maidstone Girls GS 13½/16; 2 Henrietta Barnett School (where?) 6½; 3 Oxford High School for Girls 4

**Under 11** (12 teams of four) 1 Northbridge House (where?) 17/18; 2 Oxford High School for Girls 15½; 3 Oxford HS II 12½; 4 Wimbledon High School for Girls 11½...

All the U11 entrants but one were private schools and all but a couple were single-sex. Bruce says he isn't targeting private schools particularly but they tend to be the ones that can afford coaches. He is targeting GPDST (Girls Public Day Schools Trust) schools. And Girls.

**SCCU GIRLS INTER-COUNTY U14 JAMBOREES** 10th June at North London Collegiate School, Stanmore

This is also late and no excuses this time, we had it in June, put it in the Kent Junior magazine, and forgot it was supposed to go in the Bulletin as well.

**Div 1** (4 teams of four) 1 Kent 6½/8; 2 Wilts (all U12s) 4; 3 Middx 3; 4 Surrey 2½

**Div 2** (5 teams of four) 1 Kent 8/12; 2-3 Middx, Surrey 7; 4-5 Norfolk, Wilts 4

**Div 3** (5 teams of four) 1 Kent 13½/16; 2 Oxon 12½; 3 Middx 10½; 4 Norfolk 10; 5 Norfolk II 5

**SUSSEX SCHOOLS U18** (8 ent) Christs Hospital Horsham; U16 (9 ent) Cavendish School Eastbourne; U14 (15 ent) Downlands School Hassocks; Girls (4 ent) Farlington School; U11 (60 ent!) St Andrews Hove; U9 Fermor Crowborough; and the Girls (9 ent) deserves a quote: "At the time of writing St Thomas' (Groombridge) are leading St Margarets (Ditchling) 2-3 with three to play." We're intrigued by this. Is it best of eight matches? Do they have adjournments? Do they play different boards on different days? Or was the report written half way through the match?

**RGS GUILDFORD: RUSSELL TROPHY** 15th September 1995  
1 RGS 6/8; 2-3 Tiffin, Hampton 5... 9 teams of 8. Results AJW Thorn

### CONGRESS RESULTS

#### SIXTH VILLAGE CONGRESS at Charlton 7-9 July 1995

**Open** (41 ent) 1-3 Mark Hebden (Braunstone), John Emms, Chris Ward (both Maidstone) 5/6; 4 Alan Perkins (British Airways) 4½... JUNIOR Alex Trifunovic (Acton)

**Major** (66 ent) 1 Mark Roberts (Dartford) 5½/6; 2-3 Norman Blake (Redhill), Nathan Alfred (Beckenham) 5; 4-7 Chris Todd (Int Students), Ravi Mukherjee (Harrow), Matthew Noakes (Maidstone), Peter Finch (Beckenham) 4½... JUNIOR Martin Taylor (Rainham), Catherine Holmes (Hayes), Desmond Tan (Richmond Juniors), Toby Stock (Folkestone), Thomas O'Brien (Ilford) 3½

**Minor** (61 ent) 1 Jinwoo Song (Kings Head) 5½/6; 2-3 David Hunt (Welling), Jasper Goldman (Westminster) 5; 4-6 Steve Mills, Alvin Kissoon (both Maidstone), Angus James (Surbiton) 4½... JUNIOR Chris Sharp (Kilndown) 4  
Results Ty Jefferies

**THIRD SCCU INTERNATIONAL** at Golders Green 14 - 19 August 1995 had 49 players. Nationality English unless otherwise stated. 40 in two, then QPF 60/60.

1 Russell J Dive (NZ) 7/9; 2-6 Mark L Condie (Sco), Benjamin MS Martin (NZ), Daire McMahon (Irl), David A Sands, Jonathan G Wilson 6; 7-10 Richard L Britton, Eduard Gufeld (Geo), Nicholas R Moloney, William Stanton 5½; 11-17 Paul T Georghiou, Costas Harris, Brett D Lund, Luke J McShane, Robert Parker, Matthew J Turner, Astrit Zymberi (Alb) 5...  
Results DR Sedgwick

#### THANET CONGRESS 18-20 August 1995

**Premier** (7 entries!, shriek not ours) 1 A Adelaja (London) 4½/5; 2 MG Shephard (Griffin Dons) 3½; 3 Z Mehmet (Lewisham) 3...

**Major** (37 ent) 1-2 RJ Everson (Dartford), CJ Todd (Int Students) 4½/5; 3-7 A Fleming (Eastbourne), P Zabrocki (Folkestone), N Blake (Redhill), G Zubreczki (E Grinstead), A Atkinson (St Albans) 3½... BEST THANET BJ Westover (Ramsgate); GRADING U145 R Goodfellow (Int Students)

**Intermediate** (52 ent) 1-4 N Bye (Ealing), I Josephs (Monaco), H Richards (Whitstable), BJ Thatcher (Margate) 4/5... BEST THANET M Hougham (Whitstable); GRADING U115 M Zukunft (Herne Bay)

**Minor** (24 ent) 1 KW Smith (Sidcup) 5/5; 2 DJ Smith (Maidstone) 4½; 3-4 M Curran (S Norwood), G Rowe (Gt Yarmouth) 3½... BEST THANET W Jeffery (Birchington)

**Special Prizes:** Ladies L Broomfield (S Norwood); Seniors (60+) D Roussel (Birchington); Juniors (15-) T Wood (Beckenham), R Scott (Welling). On the assumption that 60+ means 60 and over, 15- presumably means U16.  
Results AD Hargreaves

#### BERKS AND BUCKS at Maidenhead 26-28 August 1995

**Championship** (16 pl) 1 GW Lawton (Birmingham) 5/5; 2 Miroslav Houska (Maidenhead) 3½; 3-5 ST Ansell (Oxford), DH Cummings (Bracknell), HW Murphy (Maidenhead) 3...

**Challengers** (16 pl) 1 DS Tucker (Dartford) 4½/5; 2 PM Stimpson (Guildford) 4; 3-4 DL Roberts (Bracknell), RJ Starkie (Oxford) 3½..

**Reserves A** (16 pl) 1 GV Cadden (NW3) 4½/5; 2-4 CP Botham (Ipswich), KF Hawkins (Marlow Bottom), MR Taylor (Gillingham) 3½...

**Reserves B** (16 pl) 1 SP Clark (Gerrards Cross) 4/5; 2-4 AP Challenger (Wendover), JJ Foster (Newbury), WK Jones (Bude) 3½...

**Reserves D** (14 pl) 1 DJ Webb (Slough) 4½/5; 2-3 MG Porter (Reading), AS Willis (Bracknell) 3½...

**Reserves E** (14 pl) 1-3 JG Gardner (Berkhamstead), T Rogers (Alresford), CD Weaver (Slough) 4...

**Reserves F** (14 pl) 1 S Weaver (Slough) 4½/5; 2-3 TJ Frost (Carterton), PB Hicks (Cookham) 3½...

Results AJ Cox

**MAIDSTONE 22-24 September 1995**

**Open** (37 pl) 1 JM Emms (Maidstone) 6/6; 2-4 D McMahon (Mitcham: declined BCQ), CR Chandler (Phoenix), L Rutherford (Brighton) 4½; 5-6 JP Conlon (Earley), M Anderton (Guildford) 4... **BEST GRADING PERFORMANCE** (performance minus grade) 1 PD Fenn (Sittingbourne) 3½, 2 D Harwood (Maidstone) 3½. **GRADING U190** M Anderton, U170 FJ Musson (Tunbridge Wells) 3. **JUNIOR** JP Conlon.

**Under 160** (36 pl) 1 G Josephs (Dartford) 5½/6; 2-3 MD Noakes (Maidstone), P Cusick (Downend & Fishpond) 4½; 4-8 P Zabrocki (Folkestone), MR Taylor (Rainham), N Blake (Redhill), G Scamardella (Eastbourne), RR Harper (Eastbourne) 4... **BEST GRADING PERFORMANCE** 1 A Kissoon (Maidstone) 3½, 2 S Mills (Maidstone) 3. **GRADING U150** S Willison (Hastings) 3½; U140 G Scamardella. **JUNIOR** P Zabrocki.

**Under 130** (47 pl) 1-3 J Brief (Barnet Knights), TE Conlon (Earley), A James (Surbiton) 5/6; 4 D Roberts (Lewes) 4½; 5-12 BFJ Frost (Blackbird), IK Cross (Hampton), P LeBreton (Phoenix), J McKenna (Beckenham), CJ Gardiner (Reading), N Benn, M Zukunft (Herne Bay), M Jones (Chislehurst) 4... **BEST GRADING PERFORMANCE** 1 M Zukunft, 2 P LeBreton. **GRADING U120** M Jones; U110 D Howard (Charlton) 3½. **JUNIOR** S Thanesan (Maidstone) 3

**Under 105** (40 pl) 1-2 G James (Monmouth), RS Rackham (Ashford Kent) 5/6; 3-5 BJ Smith (Barbican), KW Smith (Sidcup), E Campbell (Sidcup) 4½; 6-12 DJD Beaven (Sidcup), SD Weaver (Slough), G Plume (Sidcup), T Thiruchelvam (Richmond), KR Grist (Swanley), P Higgins, RS House (Black Lion) 4... **BEST GRADING PERFORMANCE** 1 RS House, 2 KR Grist. **GRADING U95** SD Weaver, U80 P Higgins. **JUNIOR** T Thiruchelvam

**Rapidplay Sunday** (27 pl) 1 B Cafferty (Hastings) 5/5; 2 PW Eldridge (Rainham) 4; 3-7 J Allan (Maidstone), J Howson (Dartford), KRP Kingston (Phoenix), JF Knowles (Maidstone), P Kelly (Kings Head) 3½... **GRADING U165** J Allan; U135 G Parker (Eastbourne) 2½; U120 G Lock (Crawley) 3

The Maidstone organisers were using a snazzy computerised system which numbered the players 2, 4, 6, 8 and so on. It was apparently leaving room for late entries. Or something, we scarcely understood the explanation. The wall charts were done by hand with late entries on the end, but numbered as though in their correct alphabetical places. Don't know if your Editor was the only person to find this confusing. It's a nice venue, though.

We mentioned a congress organiser, last time, who'd suffered a rubber cheque and found afterwards that the offender had a history of defaulting on payment. The organiser tells us he got a telephone call recently from the villain of the piece, inquiring about late entry to another congress. On receiving a predictable answer he expressed surprise about the debts, said he'd lately changed bank and address, promised to turn up and pay in cash, and DID. Plus all his debts and a donation for the bother.

To tidy up last season's results:

**BCF U175 Final**

Essex*	1.7.95	Notts
1 R Heppinstall 174 (B)	1 0	NA Lazonby 174
2 DJ Millward 172	0 1	PS Fallon 171
3 PC Doye 171	½ ½	KGE Morrison 170
4 CR Ramage 171	0 1	J Harrison 169
5 ID Hunnable 169	0 1	A Chu 169
6 IBN Smith 165	½ ½	SJ Burke 168
7 TD Whitton 168	0 1	AM Ashby 165
8 R Waldteufel 162	0 1	CS Cantrill 164
9 M Weighell 162	0 1	G Halfpenny 162
10 A King 161	1 0	RJ Webster 161
11 NH Twitchell 160	1 0	PJ Merces 159
12 JA Philpott 157	1 0	D Amour 155
13 P Walker 153	1 0	M Darlington 152
14 S Harwood 150	0 1	N Graham 152
15 SM Williams 152	½ ½	JUL Cast 151
16 AD Hartland 149	½ ½	TA Lane 150
17 A Drake 146	0 1	BM Hayward 149
18 PR Barclay 146	0 1	AJ Wright 148
19 RD Sharman 145	0 1	JJ Wagenbach 147
20 MRA Murrell 137	½ ½	HR Edwards -
(Birmingham)	7½ 12½	

**SCCU U180 KO Final**

Sussex*	16.9.95	Surrey
AO Pickersgill 178	½ ½	KD Richardson 175
RJ Almond 175	0 1	KP Mynett 176
SON Hawes 173	0 1	ME Osborne 171
IG Kelly 168	0 1	DR Sedgwick 169
CN Hann 168	1 0	CRA Clegg 166
MR Stott 167	½ ½	PJJ Gibbons 165
A Hall 167	0 1	DA Tuddenham 164
IP Judd 160	0 1	PS Brown 157
ASJ Fleming 169	1 0	PD Dupre 156
L Rackham 120	1 0	EP Goggin 130
(Brighton)	4 6	

1994-5 grades. "New grades gave Surrey the advantage." Old grades had Sussex a point and a half up, on average, and new ones have Surrey a point-and-a-bit up. Both sides have "improved". Sussex have one player, and Surrey two, who will be ineligible this year.

We remarked last time that lots of final and semi-final matches, from the BCF stage of the counties championships, hadn't reached us. The Essex - Notts match was one of

them. David Smith, Essex match captain, tells us he sent it promptly. He was, we think, a little upset to be bracketed with the match captains that don't bother. Sorry, and it's true he always does. We could have phoned round chasing things but it's a bit embarrassing doing that when a team's lost! (They all had, except Cambs and we didn't fancy our chances of getting hold of them.)



**SCCU COUNTY FIXTURES 1995-6**

Teams entered:

	Br	C	E	H	K	M	O	Sy	Sx	
Open	*	*	*	*	*	*	*	*	*	
U175			*		*			*	*	(double round)
U150			*	*	*			*	*	
U125			*		*		*	*	*	(double round)
U100			*	*	*					(double round)

Camb and Oxon have given notice that they are exercising their right to play all matches over 16 boards in the Championship.

What is going on in Middx' (This remark is entirely your Editor's responsibility.)

	Open	U175	U150	U125	U100
Sep 30	BrH				
Oct 7	KM ESx				KH
14		EK SxSy		EK	
21	CSy MBr OK SxH		SxH	OE	
28		SyE SxK		SySx	
Nov 4	BrO HE KC SxM		KE	SxO	KE
11	SyO			SxK	
18	CBr ESy OM SxK		HK SxSy	SyO	HK
25		ESx KSy		ESy	
Dec 2	BrSx KE MC SyH			KO	
9		KE		KSy ESx	
Jan 13				EO	
20				KE SxSy	
27	CO EBr HK SySx		ESx SyH	OK	EH
Feb 3		ESy KSx		KSx	
10	HC KSy ME OSx		ESy KSx		EK
17		SyK SxE		SyK SxE	
24	EO HM SyBr SxC		HE SyK	OSx	HE
Mar 2				OSy	
9	BrK CE OH MSy			SyE	
16		SySx			

Addresses:

**County Match Controller** DR Sedgwick, 23 Tierney Court, Canning Rd, Croydon CR0 6QA 0181 656 7682

**Match captains**

- Berks O NW Dennis, Boundary House, 230 Greys Rd, Henley on Thames, Oxon RG9 1QY 01491 576052
- Camb O R Little, Churchill College, Cambridge CB3 0DS
- Essex O RD Manning, 24 Cedar Court, Meadow Way, Chigwell, Essex 0181 500 3622
- 175 SD Bates, 50b Endsleigh Gardens, Ilford, Essex IG1 3EH 0181 518 6079
- 150 M Tucker, Flat C, 107 Claremont Rd, London E7 0PY 0181 548 1414
- 125 RP Joyce, 215a Waterhouse Moor, Harlow, Essex CM18 6BW 0181 548 1414
- 100 T Allen, 9 Buxton Rd, Upshire, Waltham Abbey, Essex EN9 3PP 01992 769303
- Herts O THF Ray, 87 Sunnyhill Rd, Boxmoor, Hemel Hempstead, Herts 01442 259804
- 150 MM Wali, 56 Rowans, Welwyn Garden City, Herts 01707 331833
- 100 A Brewis, 5 Cedar Close, Ware, Herts SG12 9PG 01920 463698
- Kent O G Botley, 26 Crescent Rd, Bromley, Kent BR1 3PW 0181 464 1357
- 175 LR Gurr, 13 Neath Court, Northumberland Rd, Maidstone, Kent ME15 7JS 01622 758448
- 150 RC Shilling, 184 Kingsnorth Rd, Ashford, Kent TN23 2LS 01223 629175
- 125 IC Smith, 19 Osgood Gardens, Orpington, Kent BR6 6JU 01689 858568
- 100 S Moate, 2 Carey Court, Gravel Hill Close, Bexleyheath, Kent DA6 7NT 01322 55484
- Middx O RJ Pearce, 43 Sinclair Rd, London W14 0NS 0171 602 0756
- Oxon O DG Hackett, 16 Hollis Close, Witney, Oxon OX8 6SW 01993 778374
- 125 D Metcalfe, 9 Roosevelt Rd, Long Hanborough, Witney, Oxon OX8 8JG 01993 883044
- Surrey O PD Dupre, 13 Russell Rd, Walton on Thames, Surrey KT12 2JZ 01932 241550
- 175 FC Manning, 44 Willow Rd, Wallington, Surrey SM6 0PF 0181 647 0063
- 150 FC Manning
- 125 D Parsons, 3 Fir Tree Grove, Carshalton, Surrey SM5 4NG 0181 647 7297
- Sussex O P Watson, Flat 7, Regency Court, Withdean Rise, London Rd, Brighton, E Sussex BN1 6YG 01273 505480
- 175 RD Hirsch, 5 Orde Close, Pound Hill, Crawley, W Sussex RH10 3NG 01293 883244
- 150 Dr DL Roberts, Flat 1, 28 High St, Lewes, E Sussex BN7 2LU 01273 475275
- 125 MA Bryant, 88 Manor Rd, Hastings, E Sussex TN34 3LP 01424 428830

**NOTES TO MATCH CAPTAINS**

David Sedgwick's notes to match captains include the following points.

**Match results:** Result sheets must be sent to DRS within one week of the match, and should also be sent promptly to the Bulletin for publication.

**Ungraded players:** In the grading-limited divisions, ungraded players may play only if cleared with DRS in advance. Where a player's last published grade is above the limit and relates to 1990 or later, he does not intend to grant clearance. Beyond this he will proceed on a case by case basis. To date (20th September or thereabouts) only Surrey U125 have requested clearance for anyone.

**Draw claims:** Match captains should note the BCF's "additional rules" which apply if there is no arbiter present. A scoresheet must be submitted if 2(b) and 4 apply. Even if they don't apply, either side may still submit a scoresheet or other evidence provided they do so *at the outset*. The Arbiter will expect the claimant to have moved at a reasonable speed up to the time of the claim. (Editor's note: a recent county magazine suggests, erroneously, that all you have to do is get a drawn position at the time check, sit there till you've got less than two minutes left, then claim. The BCF's published Guidance for Arbiters makes it quite clear that you can't do this.)

And talking of rules...

**NEW RULES: QUICKPLAY AND QUICKPLAY FINISH**

"approved by the Chess Arbiters Association for use from 1st September 1995"

All right then, Rapidplay and Quickplay finish. Never understood that. We've put the bit about the CAA in quotes because we're not sure what status it gives the changes. David Sedgwick, CAA secretary, tells us that SW Reuben, Director for Congress Chess, has accepted them. SWR thinks that's good enough and who are we to disagree? So far as we know there is no formal BCF mechanism for the adoption of rules like these. There's probably no rule about how much notice you're supposed to give, either! The changes were promulgated at the end of August and we expect they'll be in the September *ChessMoves*. Presumably they will have immediate force *de facto* if not *de jure*, in most congresses at least.

QPF changes are few, though we'll go to town on one of them:

(a) If you claim a draw under Rule 16 and the Arbiter says no, or postpones his decision, he may also give your opponent extra time. Expect this is aimed at people who make frivolous or dubious claims in order to gain thinking time.

(b) Just for completeness: they've removed the reference to the 75-move rule in Rule 18. (They've also changed or not, something in Rule 11 that looks like a printer's error in the Yearbook.)

(c) "Cannot possibly checkmate" is thrown out, and mating material is now defined as "sufficient material to allow a position to be reached in which the opponent, having the move, is unable to prevent mate next move". Got that? Your Editor's comments, though they form the bulk of this article, are handily printed at the end of it where you can ignore them if you want.

**Rapidplay** is now more like QPF. Changes (a) and (c) above apply to Rapidplay as well. It's not stated whether, in (c), the moves used to construct the final position have to be legal. No doubt we can take that as read but a "legally" inserted in the right place would have made it explicit. In addition they've removed the rule that says illegal moves lose if either side has less than 5 minutes left. However, if your opponent has less than 5 minutes left he may now automatically claim an extra minute. Oddly, this automatic right to an extra minute does not apply to QPF. The Arbiter still has discretion to award extra time, in both varieties, whatever the clocks say.

Rapidplay still differs from QPF in other aspects of its treatment of illegal moves, in the role of the Arbiter, and in the fact that you don't have to write your moves down.

**Comment on (c)**

David Sedgwick, in a note to the SCCU Rules and Appeals sub-committee, describes the QPF changes as "of a minor nature". Knowing how we felt about (c) he rather expected us to disagree with him. Not at all. The new rule's not exactly going to turn the congress scene upside down. But we *don't* like it, and what's the world coming to if the SCCU Bulletin can't get worked up over trifles?

Let's say at the outset that (except in the final paragraph) we're thinking of cases where no one's claimed a draw, so that loss on time is subject only to the mating-force rule and if you've got it you win, no matter how silly it seems. Failure to get that clear has already led your Editor into one cross-purposes conversation. Couldn't understand why the Arbiter at the other end kept talking about common sense and Arbiters' discretion. He was as rigid as you could wish when we'd once established what we were talking about.

Anyway. We've seen a definition something like the new CAA one before, and didn't understand the point of the tortuous wording. But read the new Guidance for Arbiters: "Two Knights and King versus lone King is not mating material because the defending King cannot be forced to move to the corner of the board so that mate can be delivered." Actually he doesn't need to be in the corner to get mated, but the error's of no consequence since the point's true for any mating position. Other things, like King and Knight v King and Rook, or King and Bishop v King and other-colour Bishop, also cease to be mating material.

Now that we understand the definition, we don't like it! So what? So nothing. We're going to tell you why, though. The rule's needless and arbitrary. Lone P on the second rank against nine Qs can't force a lot, but it counts as mating material because if the opponent's suicidal it legally can reach a position where mate is forceable. If the opponent's allowed to be that suicidal in the post-flagfall "play", why isn't he allowed to walk into a mate in one against two Ns? Why accept one absurd result and not another?

There's more, if you're still there. Mating with a P against nine Qs is far *more* absurd than mating with two Ns, but at least you might argue that justice was done in those two cases because the opponent of the P was presumably trying to win and had taken a conscious decision to risk loss on time. Wonder if the new rule always serves natural justice? Let's have an Exam. You are Arbiter at the local Rapidplay congress. On adjacent boards five Black flags fall simultaneously, in these positions. No one has claimed any draws, and if you think it matters it was Black to move each time. Which Whites, if any, have mating material? The rule is rigorous and you've no judgments to make. You mustn't spend too long on it because there's a potentially tricky one at the other end of the room, but you can't help wondering what difference it would have made in C if the Kings had been the other way round. The Bulletin's answers are immediately below the diagrams.



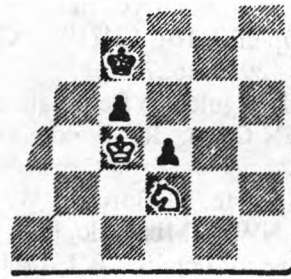
A



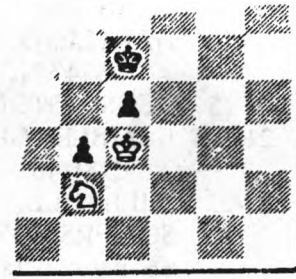
B



C



D



E

Our answers: (A) Still a White win. (B) Draw. (C) White win. Draw with Ks swapped round. (D) White win (E) Draw. If you got any of those wrong, could be it's harder than you thought. Or could be you got them right and it's harder than the Bulletin thought. Where we've said "White win" we're sure. But trivial it's not. Actually we don't *think* the problemists will have a field day. The non-trivial silly cases are probably rather few and soon learnt. But even so...

A and B are interesting. If the owner of a RP against a N wants to walk his K into the corner and commit suicide, he's allowed to. With care he can reach a position where it's his go and he has no choice but to get mated. That is, he can deliberately walk into a forced mate in two. If he tries the same trick against a B, even the "right" B, he can stick his K in the corner but then he has a problem: the final act of self-immolation isn't allowed because it's mate in one. In C (and A, for that matter) he's allowed to walk into a mate in one if he wants because he *could* have walked into a mate in two. If this makes sense to you, you'll have no trouble with D and E.

Getting rid of silly results, like wins on time when there's nothing left but opposite-coloured Bishops, is fine. Except you can't legislate for *all* silly results. Why not just be simple, and consistent, and allow them all? Retaining the old mating-force rule, by all means. But if you must fiddle, it would be better to invent a rule that doesn't in itself lead to silly results!

No doubt we should have a quick look at cases where the player whose flag is down *has* claimed a draw. Perhaps the CAA had them in mind, after all. Only thing is, there seems to be very little to look at. How is the new rule going to change things? In the positions we've considered, any arbiter in his senses would give a draw without hesitation under old and new rules alike. Well, almost. Your Editor admits he just might, under the old rules, have considered allowing the two Ns to win against an opponent who'd been teetering in and out of peril on the edge of the board and seemed to be panicking. *Might*, and it's one decision he won't mind being spared. Can you think of any other cases where it will make a difference? Are we missing something important? Or are there Arbiters so wanting in sense that they *would* have given a win with opposite-coloured Bishops? If so they'll still be lethal under the new rules. White win in A, no doubt.

### Quotes

"DO NOT AGREE TO A POSTPONEMENT AND DO NOT SEEK ONE." Advice to club match captains in a county league. If your opponents want a postponement, don't even *look* at dates. Because the moment you say "Well, I'll see if I can find a date but no promises", you lose your right to a win by default. Now *there's* a way of stopping indefinite postponements. Except it doesn't, apparently.

"This season we are once more sitting out from the main SCCU inter-county competition, in spite of the fact that the SCCU Council approved our proposal that the rules be changed to allow counties to insist on 16 board matches in the Open if they wish." - A county newsletter!

"The event got under way and was making good progress when one of the competitors broke a limb."

## CONGRESS DIARY

- Sep 30- 1 MILL HILL Open; U160/120. Tony Corfe, 51 Borough Way, Potters Bar, Herts EN6 3HA 01707 659080
- Oct 8 CHALK FARM at Haverstock School NW3. U175/150/125/100; U90 junior; U80 girls. BH Birchall, 26d Colville Square W11 2BQ 0171 797 8031
- 6- 8 SPECTRUM at PRESTON. U180/140/105. Norman Went, 53 New Zealand Way, Rainham, Essex RM13 8JT 01708 551617
- 7- 8 METROPOLITAN at the Bishopsgate Institute EC2. Open; U161/126. PL Szabo, 131 Roll Gardens. Ilford, Essex IG2 6TL
- 7-15 ISLE OF MAN Open; U186/126. Dennis Helmsley, 18 St Marys Avenue, Port St Mary, Isle of Man IM9 5ET 01624 833742
- 14 GOLDERS GREEN. Adam Raof, PO Box 1962, London NW4 4NF 0181 202 0982
- 14 WESTMINSTER. John Sargent, 903 Longbridge Rd, Dagenham, Essex RM8 2BU 0181 595 5881
- 14 GIRLS OPEN at Basingstoke. U17/15/13/11/10/9/8/7. Entry fee -£3 per competitor, it says here. JH French, 31 Brocas Drive, Basingstoke RG21 2LS 01256 472537
- 14-15 HARTLEPOOL Open; U161/131/101. GR Marshall, 27 Bruntoft Avenue, Hartlepool, Cleveland TS24 9NE 01429 263627
- 15 KENSINGTON. D Agble, 15 Beit Hall, Prince Consort Rd SW7 2BB 0171 594 9456
- 21-22 BUMBLES GREEN Open. RE Waldteufel, 229a Tottenham Rd, Palmers Green, London N13 6DJ 0181 482 7312
- 21-22 MILL HILL. AC Corfe, 51 Borough Way, Potters Bar, Herts EN6 3HA 01707 659080
- 22 SOMERS TOWN NW1. Mixed doubles, pub chess quiz, gambit tournament, shuffle chess, children, pensioners, ring for details. BH Birchall, 26d Colville Square W11 2BQ 0171 797 8031
- 27-29 WEST WALES at Swansea. Open; U1850/1550/1250. Les Philpin, 59 Cecil Rd, Gowerton, Swansea, W Glamorgan SA4 3DF 01792 874984
- 28-29 HERTS CA at Letchworth. Open; U166/146/126/111/91. Nick Camp, Herts CA, 93 Saturn Way, Highfield, Hemel Hempstead, Herts HP2 5PD 01442 399611
- 28 JOHN HARRADENCE. Norman Went, 53 New Zealand Way, Rainham, Essex RM13 8JT 01708 551617
- 29 CHESS & BRIDGE NW1. Open. Chess & Bridge Ltd (Rapidplay), 369 Euston Rd NW1 3AR 0171 388 2404
- Nov 4 VILLAGE at Charlton. U210/165/135. TR Jefferies, 112 Austen Close, Thamesmead SE28 8AZ
- 11 WESTMINSTER. John Sargent, 903 Longbridge Rd, Dagenham, Essex RM8 2BU 0181 595 5881
- 12 CHALK FARM at Haverstock School NW3. U175/150/125/100; U90 junior; U80 girls. BH Birchall, 26d Colville Square W11 2BQ 0171 797 8031
- 11-12 RGS GUILDFORD U18 two days; U15/13/12A Sat, U14/12B Sun. Matthew Watts, Royal Grammar School, Guildford GU1 3BB
- 12 RICHMOND (Surrey) RAPIDPLAY. U215/170/130/95. Richard James, 95 Lyndhurst Avenue, Whitton, Twickenham TW2 6BH 0181 898 1190 or 0181 891 7547
- 18-19 INTERNATIONAL STUDENTS, London. John Weightman, Flat 1, 225a Finchley Rd NW3 6LP 0171 435 7205
- 24-26 TORBAY. *Dates not as listed in BCF Calendar.* Phil Short, Flat 4, Ellacombe Court, Ellacombe Church Rd, Torquay TQ1 1LJ
- 25 GOLDERS GREEN. Adam Raof, PO Box 1962, London NW4 4NF 0181 202 0982
- 25-26 WESTMINSTER. John Sargent, 903 Longbridge Rd, Dagenham, Essex RM8 2BU 0181 595 5881
- Dec 3 CHESS & BRIDGE NW1. Open. Chess & Bridge Ltd (Rapidplay), 369 Euston Rd NW1 3AR 0171 388 2404
- 3 SOMERS TOWN NW1. Mixed doubles, pub chess quiz, gambit tournament, shuffle chess, children, pensioners, ring for details. BH Birchall, 26d Colville Square W11 2BQ 0171 797 8031

**SCCU Treasurer.** Tony Suttill is retiring from work; don't use his office phone number. His home number is 0171 229 9750 *but please don't ring after 9 p.m.*

**ACKNOWLEDGMENTS:** Bucks CCA Newsletter for Autumn; *ChessIns* for August; Herts CA Newsletter for September; *Sussex Chess* 1995.